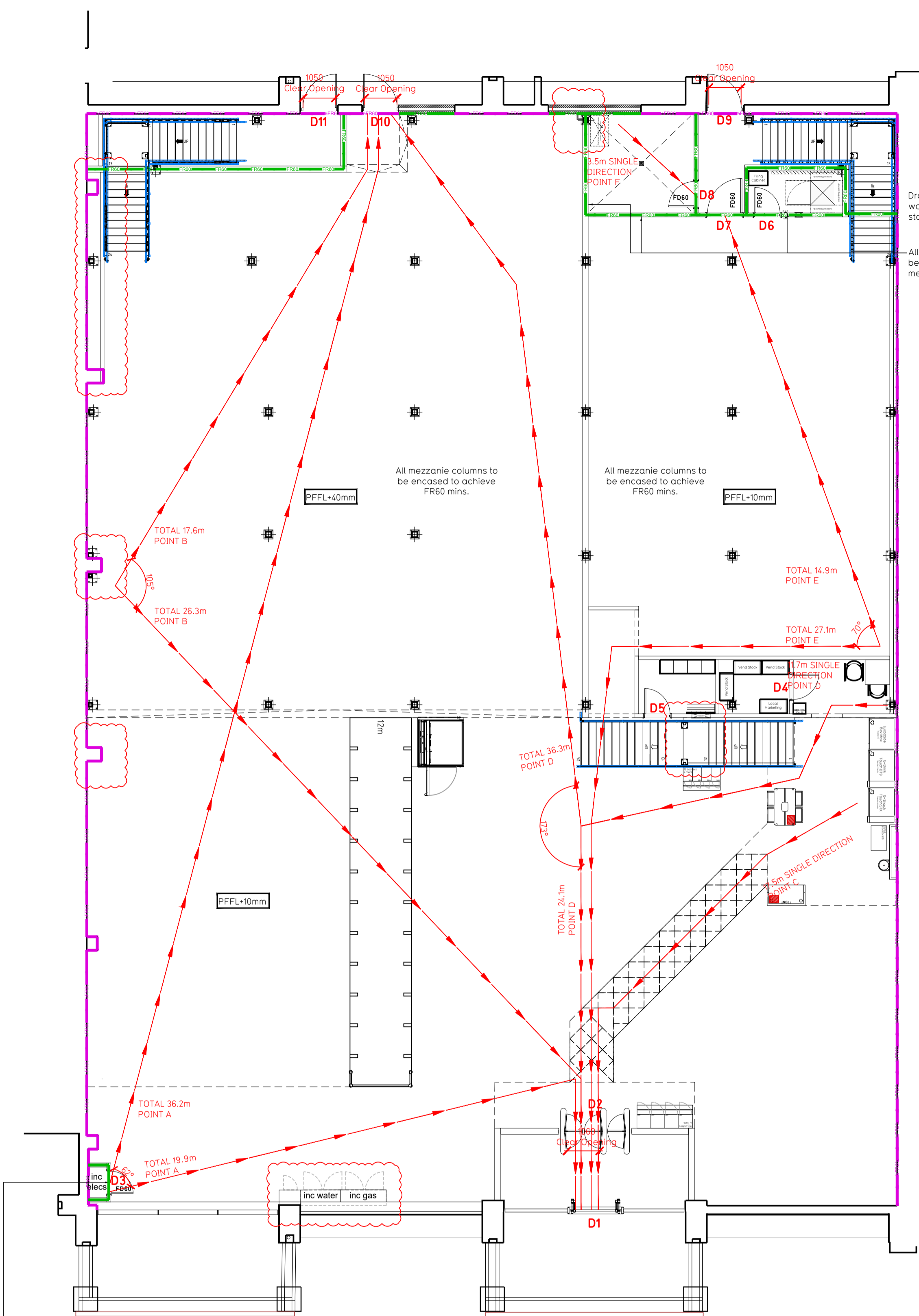
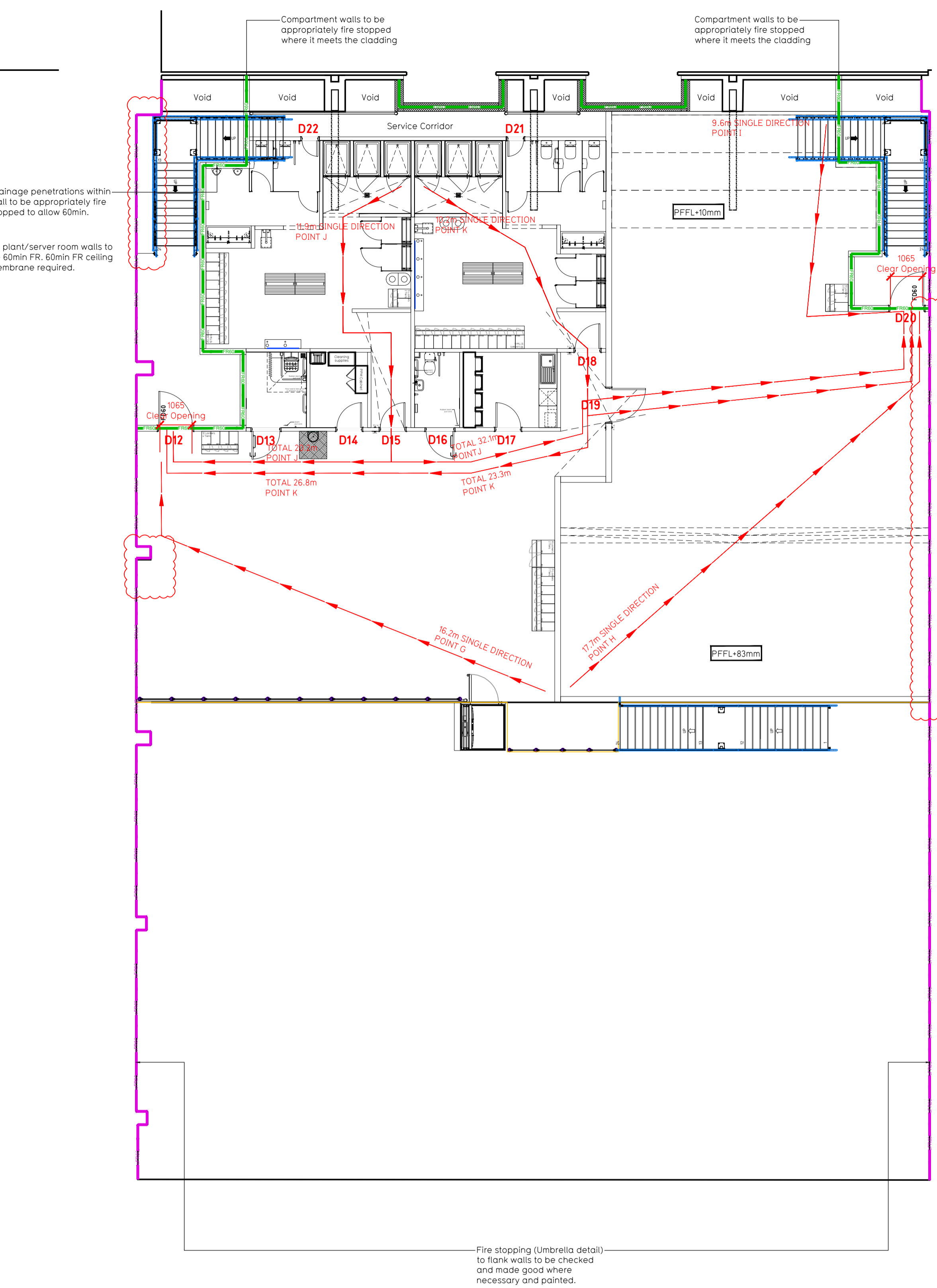


NOTE:

- Proposals must comply with all acoustic, fire & building regulation requirements
- No dimensions are to be scaled from this drawing. The contractor is responsible for checking all dimensions on site



Ground Floor Plan
1:100



Mezzanine Floor Plan
1:100

Fire Evacuation Key

	Existing wall to achieve min 30 minute fire rating (suitability of wall to be confirmed on site by Pure Gym Main Contractor)		Fire Escape Route
	Existing wall to achieve min 60 minute fire rating (suitability of wall to be confirmed on site by Pure Gym Main Contractor)		Minimum Clear Widths
	New wall to achieve min of 30min fire rating		Exit No.
	New wall to achieve min of 60min fire rating		Shared Escape Route
	Protected areas: walls, floors, ceilings and doors to achieve 30minute fire resistant construction.		Fire Door Rating
	Protected areas: walls, floors, ceilings and doors to achieve 60 minute fire resistant construction.		

Escape Route Widths:
In line with Sections 3.21 & 3.22 of Approved Document Part B, Volume 2 - 'Buildings other than dwelling houses' - the adjacent calculations provide justification for the clear opening widths for escape from each floor-level room in accordance with Table 4.4 Appendix C.

Ground Floor:
Final Exit D11 Clear Opening Width = 950mm (allows 122 persons to escape, largest opening to be discounted)
Final Exit D10 Clear Opening Width = 1050mm (allows 220 persons to escape)
Final Exit D9 Clear Opening Width = 1050mm (allows 220 persons to escape)
Total Aggregate Width for Ground Floor (Less Largest Opening Width of 1050mm from EXIT D1) = 2100mm. Ground Floor Total Estimated Occupancy Capacity = 440 Persons

Mezzanine Floor:
Final Exit D17 Clear Opening Width = 950mm (allows 122 persons to escape)
Final Exit D16 Clear Opening Width = 1050mm (allows 220 persons to escape, largest opening to be discounted)
Final Exit D15 Clear Opening Width = 1050mm (allows 220 persons to escape)
Total Aggregate Width for Mezzanine Floor (Less Largest Opening Width of 950mm from EXIT D17) = 2050mm. Mezzanine Total Estimated Occupancy Capacity = 220 Persons

Total:
Ground Floor: 440
Mezzanine Floor: 220
Total: 660 persons

Based on a NA of 14,723 gpm, the PureGym Peak Occupancy Target = 240 Persons
Calculated using PureGym Fire Safety Occupancy Levels Forecast Tool.

The designed occupancy of the unit is calculated above would allow a min. No. of 660 persons to escape, which is larger than the total estimated occupancy capacity of 240 Persons and is therefore thought to meet with the Approved Document Part B.

Fire Alarm:
FSC A100m designed and installed to BS 5839. Smoke & heat detection / emergency lighting by specialist. Please refer to M&E Engineer's drawings / specifications.

Escape Lighting:
Emergency escape lighting designed and installed in accordance with BS 5266-Part 1. Please refer to M&E Engineer's drawings for final layout and specification.

Fire Stopping:
All perimeter edges of mezzanine to be appropriately fire stopped to create compartment floor and protect mezzanine structure. All services/drainage penetrations passing through fire rated compartment floor to be fire coloured/sealed.

Escape Signage and emergency lighting is COP Under the M&E specification. Details of contractors proposals to be provided to Building Control Approved Inspector and Fire Officer within the Contractors Proposal Package, Clause 14

C03	12.02.24	Layout updates from site visit	OT/JM
C02	10.01.24	Plan and Incoming Electrics updated	OT/JM
C01	13.12.23	Mezzanine columns positioning adjusted, updates clouded red	OT/JM
Rev	Date	Description	Drawn/Checked

PROJECT TITLE		DRAWING TITLE	
DEWSBURY Units 2 & 3, Risworth Centre and Railway Street		Fire Evacuation Plan Ground and First Floor Plans	
DRAWN BY	DATE	SCALE	DRAWING No.
OT/JM	06.10.23	1:100 @ A1	2280
DRAWING PURPOSE	SCALE	NO.	REV
CONSTRUCTION		003-FEP	C03

Pure Gym Ltd
Town Centre House
The Merrion Centre
Leeds
LS2 8LY
e: architecture@puregym.com
t: 0113 285 8787
w: www.puregym.com