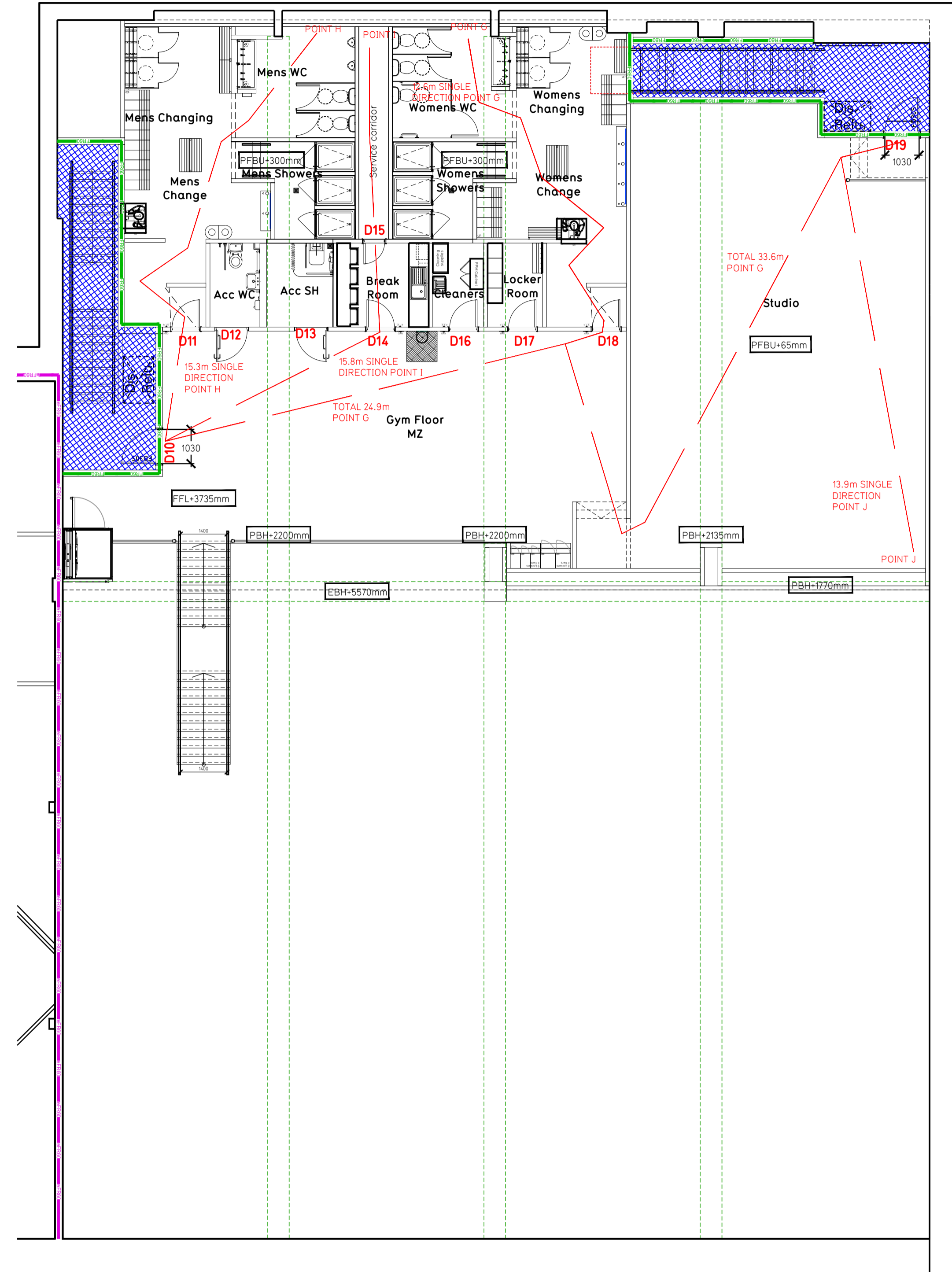
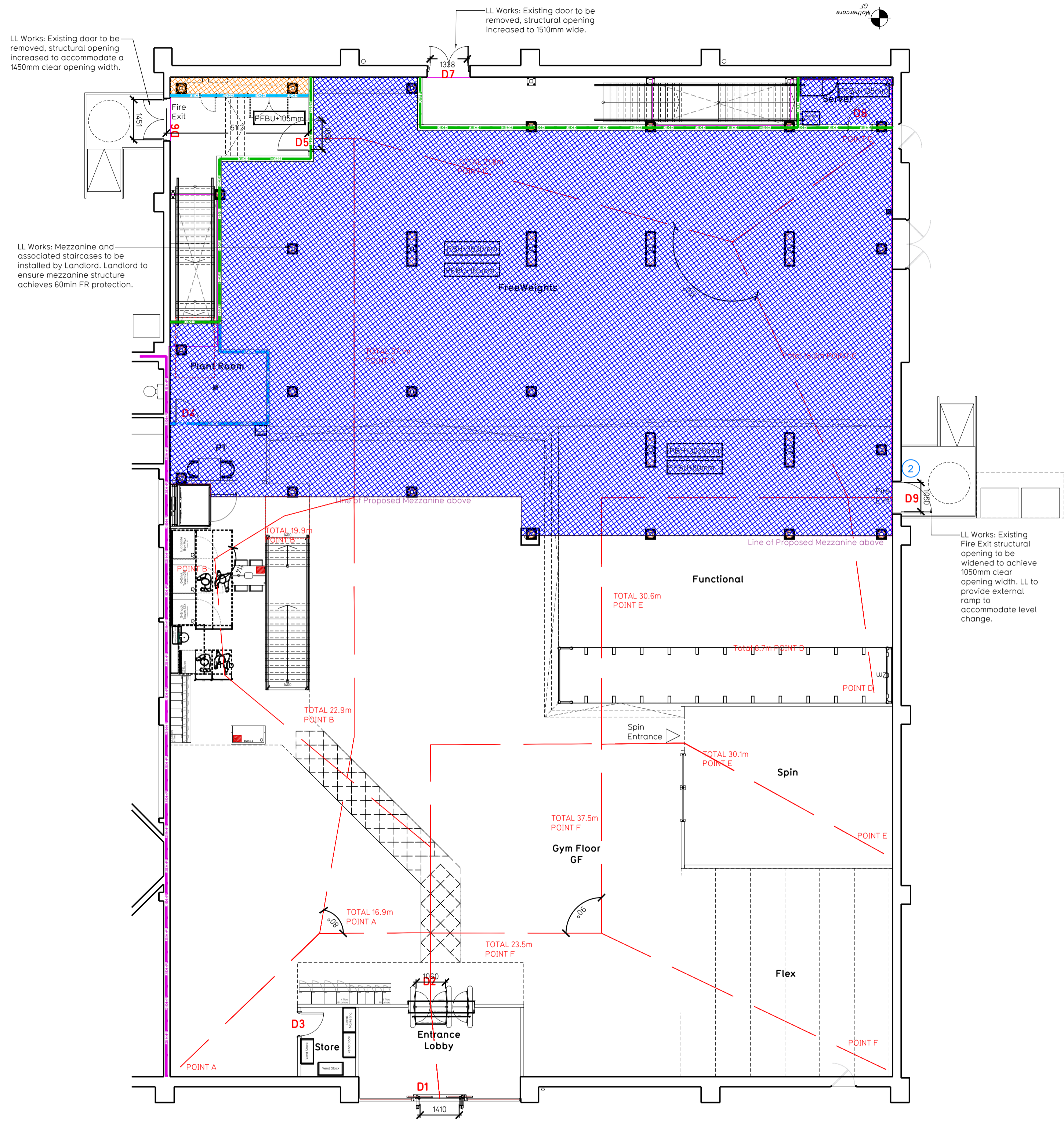
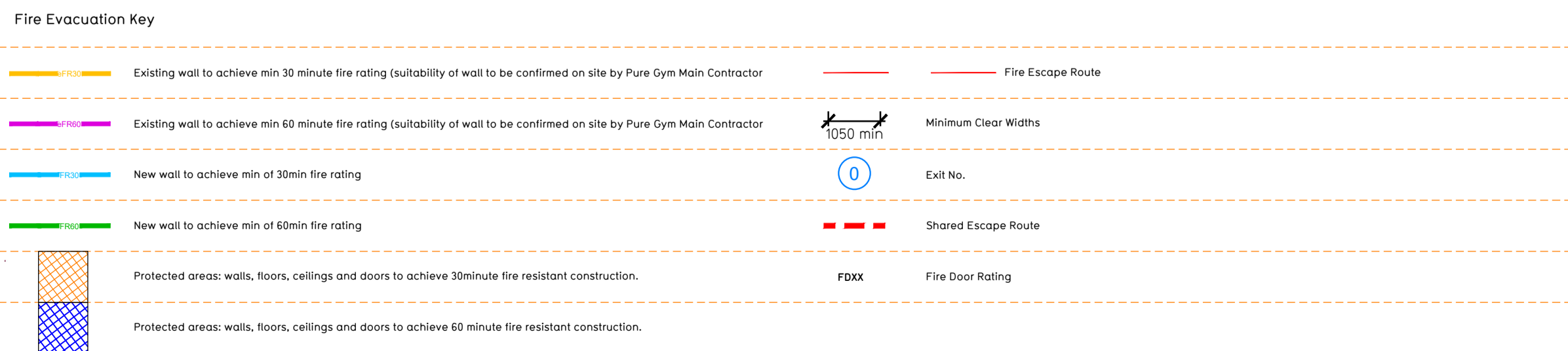


- NOTE:
- Proposals must comply with all acoustic, fire & building regulation requirements
 - No dimensions are to be scaled from this drawing. The contractor is responsible for checking all dimensions on site



Proposed Ground Floor Plan

Proposed Mezzanine Floor Plan



Escape Route Widths:
In line with Sections 3.21 & 3.22 of 'Approved Document Part B, Volume 2 - buildings other than dwellings' - the adjacent calculations provide justification for the clear opening widths for escape from each floor level / room in accordance with Table 4 & Appendix C.

Ground Floor:
Exit D1 Clear Opening Width = 1400mm but it limited by D2 Clear Opening width 1050mm (allows 222 persons to escape, largest opening to be discounted)
Exit D6 Clear Opening Width = 1450mm but it limited by D5 Clear Opening width 1050mm (allows 220 persons to escape)
Exit D3 Clear Opening Width = 1050mm (allows 220 persons to escape)
Total Aggregate Width for Floor (Less Largest Opening Width of 1050mm from D2 = 2100mm)
Ground Floor Total Estimated Occupancy Capacity = 220 Persons

Mezzanine Floor:
Exit D8 Clear Opening Width = 138mm but it limited by Mezzanine D19 Clear Opening width 1030mm (allows 110 persons to escape)
Exit D7 Clear Opening Width = 1450mm, but it limited by Mezzanine D19 Clear Opening width 1030mm (allows 110 persons to escape)
Total Aggregate Width for Floor (Less Largest Opening Width of 1030mm from D19 = 1030mm)
Mezzanine Floor Total Estimated Occupancy Capacity = 110 Persons

Total:
Ground = 220 persons to escape
Mezzanine = 110 persons to escape
Total = 330 persons to escape

Based on a NIA of 13,364sqm, the Pure Gym Peak Occupancy Target = 222 Persons.
Calculated using Pure Gym Fire Safety Occupancy Levels Forecast Tool.
The designed occupancy of the unit as calculated below would allow a max. no. of 330 persons to escape, which is larger than the total estimated occupancy capacity of 222 Persons and is therefore thought to meet with the Approved Document Part B. To allow free movement between the floors the occupancy has not been split 50/50% but rather allows for occupancy based on gym stations and functions assuming that a high percentage of the total occupancy could be on a single floor at any one time.

Fire Alarm
Fire Alarm designed and installed to BS 5839. Smoke & heat detection / emergency lighting by specialist. Please refer to MSE engineer's drawings / specifications.

Escape Lighting
Emergency escape lighting designed and installed in accordance with BS 5266, Part 1. Please refer to MSE Engineer's drawings for final layout and specification.

Fire Stopping
All perimeter edges of mezzanine to be appropriately fire stopped to create compartment floor and protect mezzanine structure. All services/drainage penetrations passing through the rated compartment floor to be fire sealed/sealed.

Escape Signage and emergency lighting is CDP under the MSE specification. Details of contractors proposals to be provided to Building Control Approved Inspector and Fire Officer within the Contractors Proposals Package, Clause 1.4

Rev	Date	Description	DRAWING TITLE	Drawn/Checked
PROJECT TITLE: Eastbourne Fire Evacuation Plan				
Unit 1, Hampden RP, Lotbridge Drive, BN23 6QU Ground and Mezzanine Floor Plans				
SKHB	15.08.23		1:100 @ A1	2061
003-FEP				
DRAWING PURPOSE: CONSTRUCTION				Rev
PUREGYM				C00
Pure Gym Ltd Town Centre House The Merrion Centre Leeds LS2 8LY e: architecture@puregym.com t: 0113 285 8787 w: www.puregym.com				