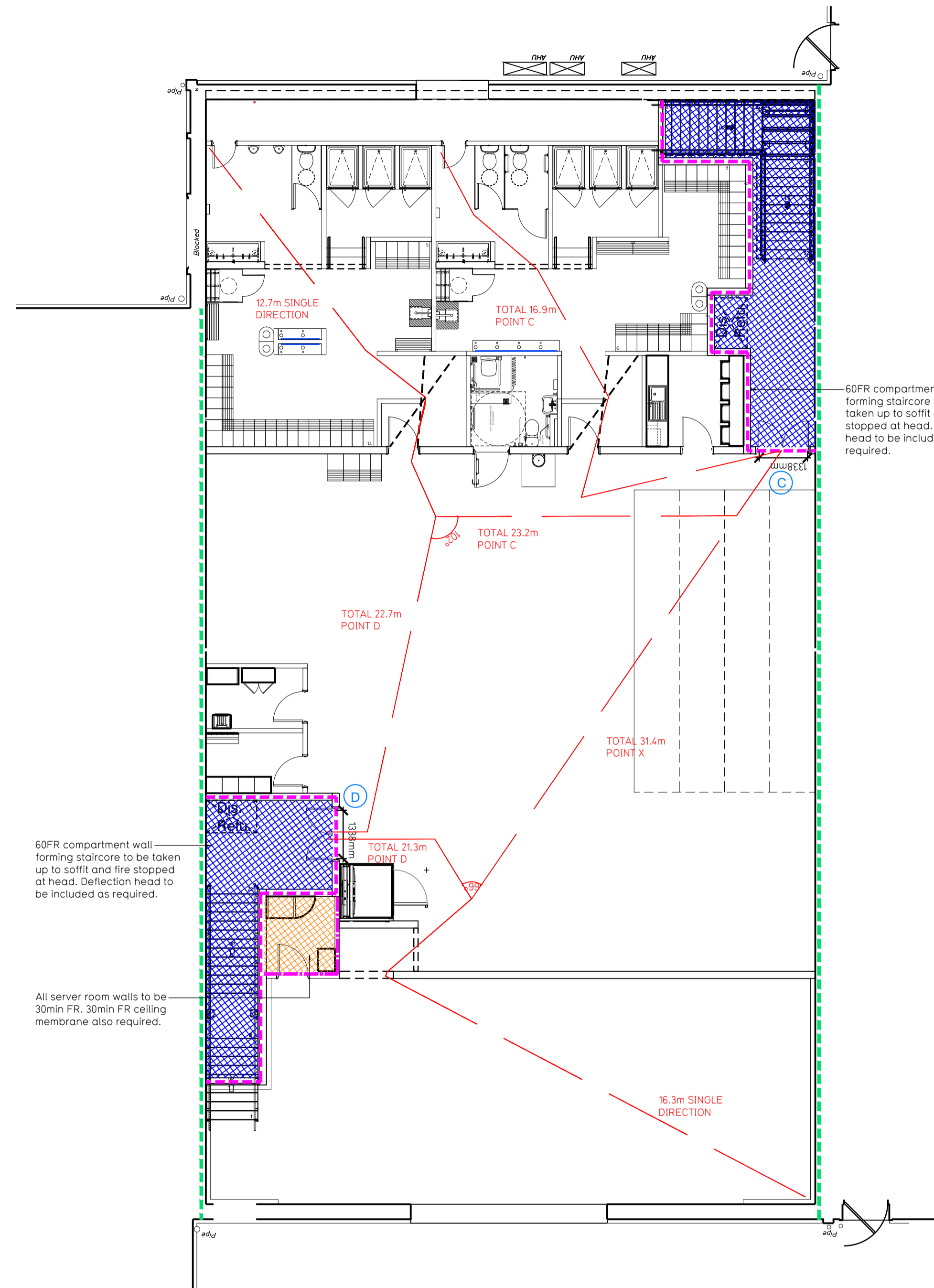
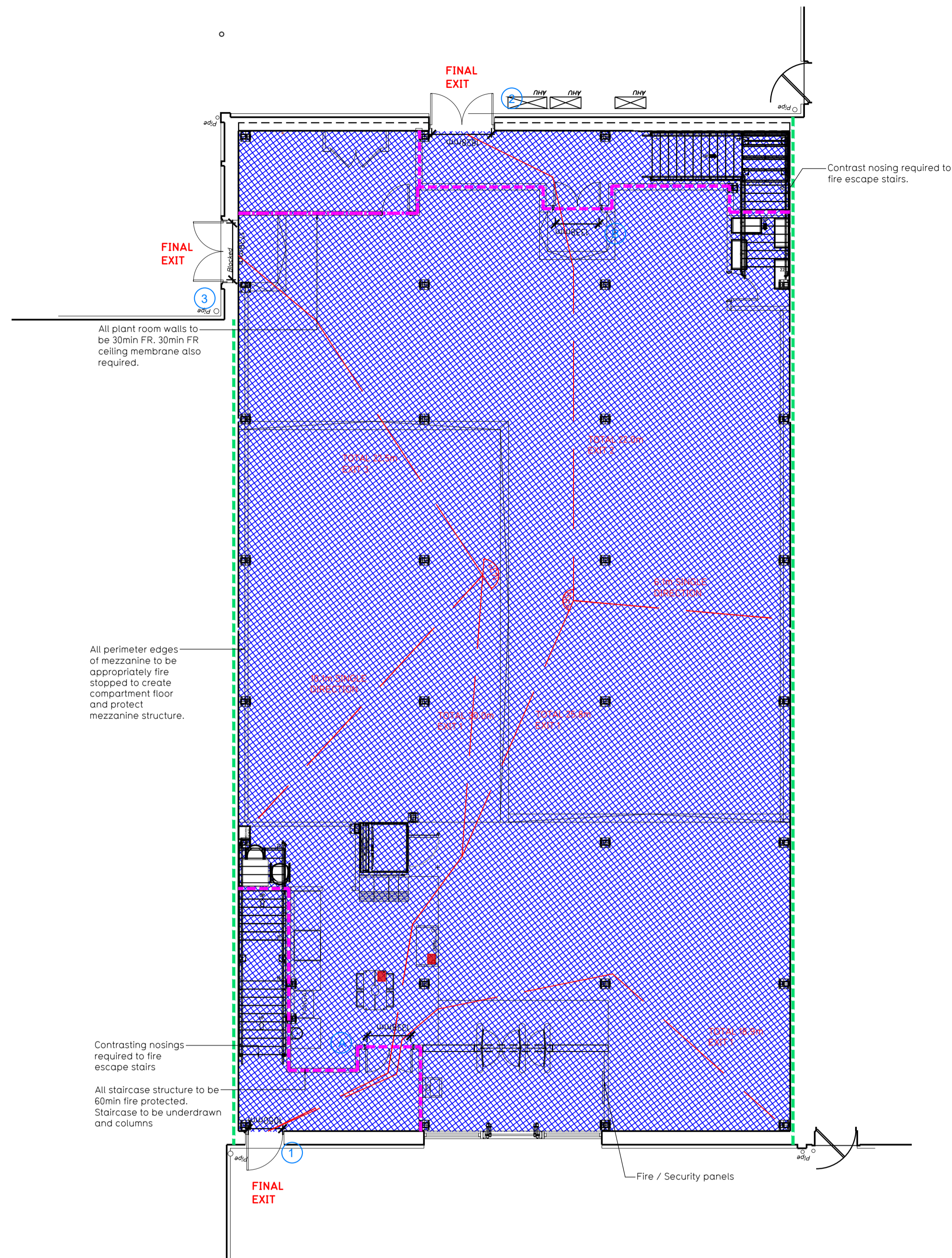
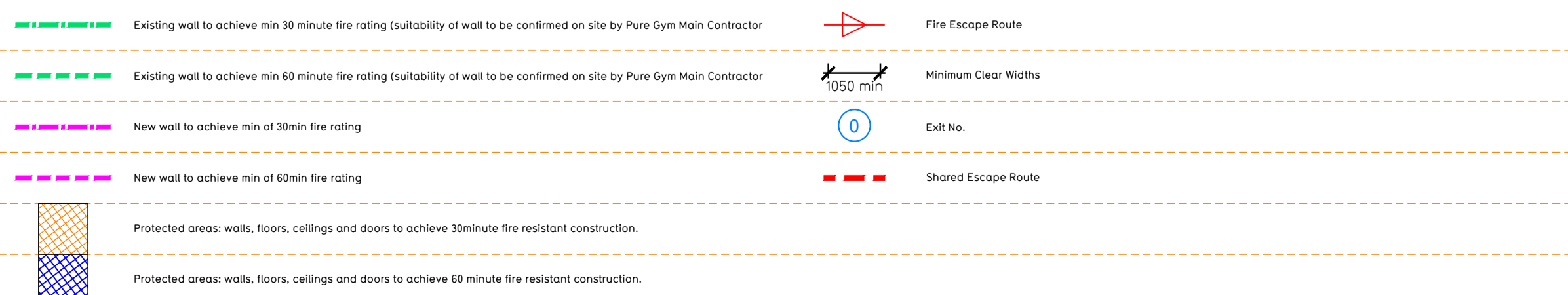


NOTE:

- Proposals must comply with all acoustic, fire & building regulation requirements
- No dimensions are to be scaled from this drawing. The contractor is responsible for checking all dimensions on site



Fire Evacuation Key



Escape Route Widths:
 In line with Sections 3.21 & 3.22 of 'Approved Document Part B, Volume 2 - buildings other than dwellings' - the adjacent calculations provide justification for the clear opening widths for escape from each floor level/ room in accordance with Table 4 & Appendix C.

Ground Floor
 Final Exit 1 Fed by Storey Exit A Clear Opening Width = 1050mm (allows 220 persons to escape)
 Final Exit 2 Fed by Storey Exit B Clear Opening Width = 1828mm (Escape occupancy limited by Storey Exit B Clear opening width = 1338mm, allows 177 persons to escape)
 Final Exit 3 Clear Opening Width = 1738mm (allows 357 persons to escape, largest opening to be discounted)
 Total Aggregate Width for Floor (Less Largest Opening Width of 1738mm from FINAL EXIT 3) = 2388mm

Mezzanine Floor
 Final Exit 2 Fed by Storey Exit C Clear Opening Width = 1828mm (Escape occupancy limited by Storey Exit C Clear opening width = 1338mm, allows 177 persons to escape, largest opening to be discounted)
 Final Exit 1 Fed by Storey Exit D Clear Opening Width = 1050mm (allows 220 persons to escape)
 Total Aggregate Width for Floor (Less Largest Opening Width of 1828mm from FINAL EXIT 2) = 1050mm

Total
 Ground Floor = 487
 Mezzanine Floor = 220
Total = 717 Persons to escape

Based on NIA of 10070sqft, the Puregym peak occupancy target = 717 persons
 Calculated using Puregym Fire Safety Occupancy Levels Forecast Tool.

The designed occupancy of the unit as calculated would allow a max. no. of 717 persons to escape, which is larger than the total estimated occupancy capacity of 177 persons and is therefore, thought to meet with the Approved Document Part B. To allow free movement between the floors the occupancy has not been split 50/50% but rather allows for occupancy based on gym stations and functions assuming that a high percentage of the total occupancy could be on a single floor at one time.

Fire Alarm
 Fire alarm designed and installed to BS 5839. Smoke & heat detection / emergency lighting by specialist. Please refer to MSE engineer's drawings / specifications.

Escape Lighting
 Emergency escape lighting designed and installed in accordance with BS 5266: Part 1. Please refer to MSE Engineer's drawings for final layout and specification.
 Escape Signage and emergency lighting is CDP under the MSE specification. Details of contractors proposals to be provided to Building Control Approved Inspector and Fire Officer within the Contractors Proposals Package, Clause 14

Rev	Date	Description	Drawn/Checked
C02	02.09.22	Plant room enlarged, relevant drawings updated	MM
C01	25.08.22	Mezzanine wall at front staircase adjusted to align with updated mezzanine design	MM

PROJECT TITLE	DRAWING TITLE
Unit 2, Alban Retail Park Boston, PE21 7NN	Fire Evacuation Plan Ground & Mezzanine Floor

DATE	SCALE	YEAR	DRAWING No.
25.08.22	1:100 @ A1	2019	003-FEP

CONSTRUCTION	Rev
	C02

Pure Gym Ltd
 Town Centre House
 The Merrion Centre
 Leeds
 LS2 8LY
 e: architecture@puregym.com
 t: 0113 285 8787
 w: www.puregym.com