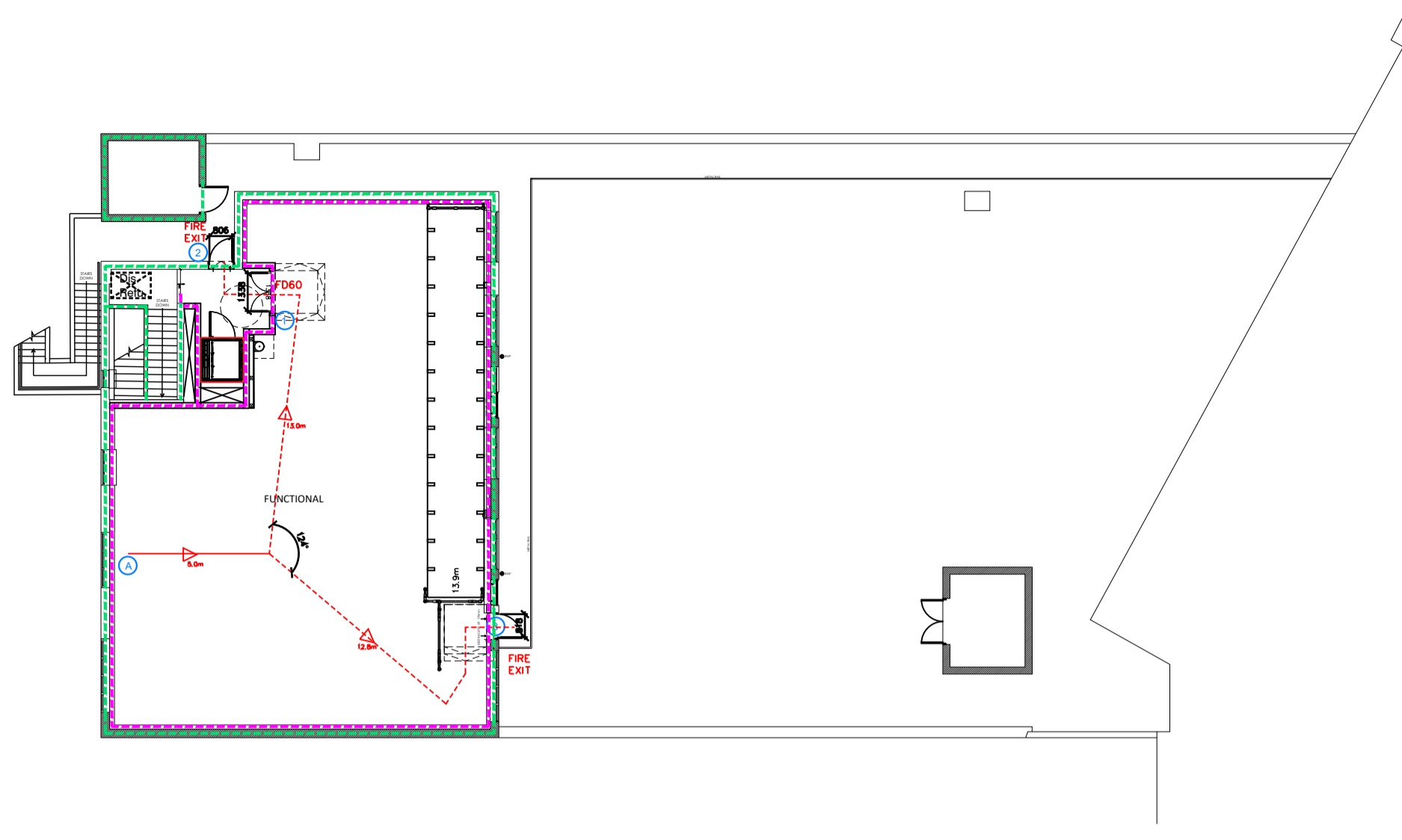
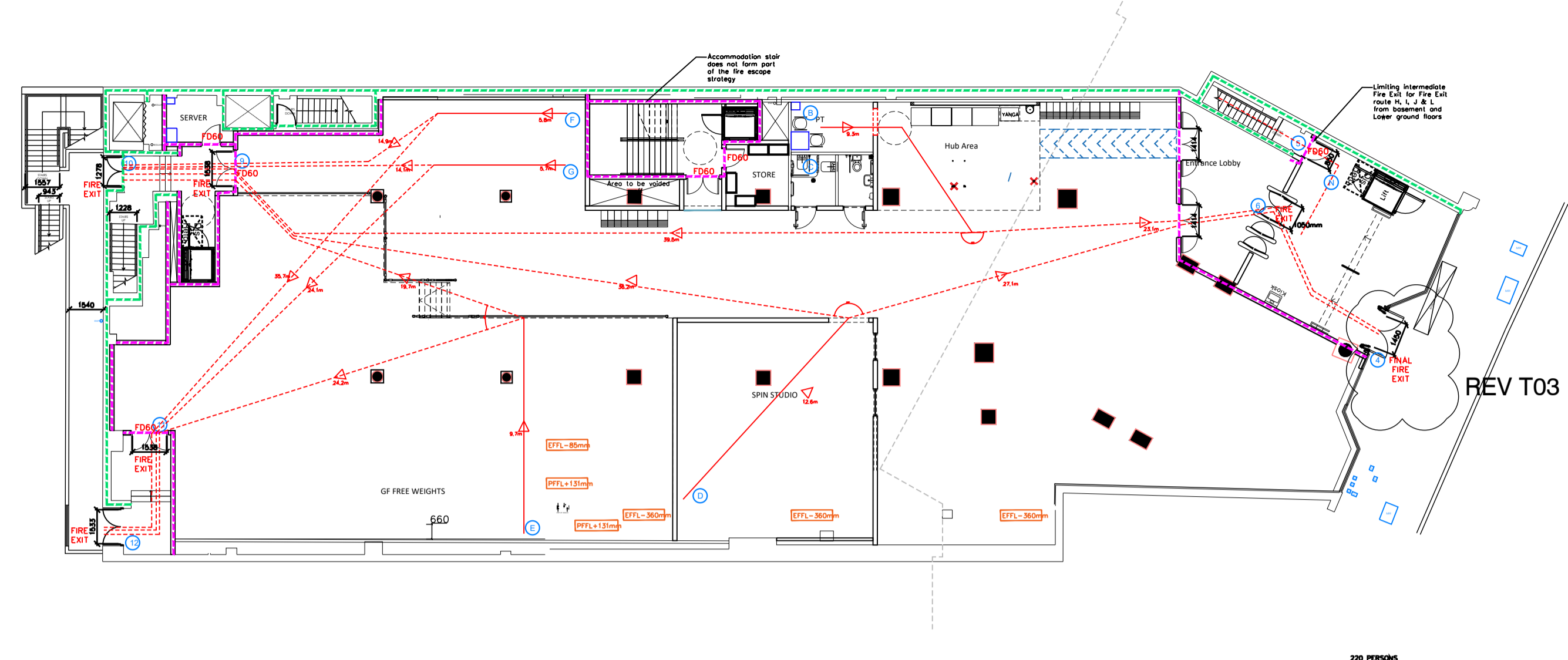


General Notes

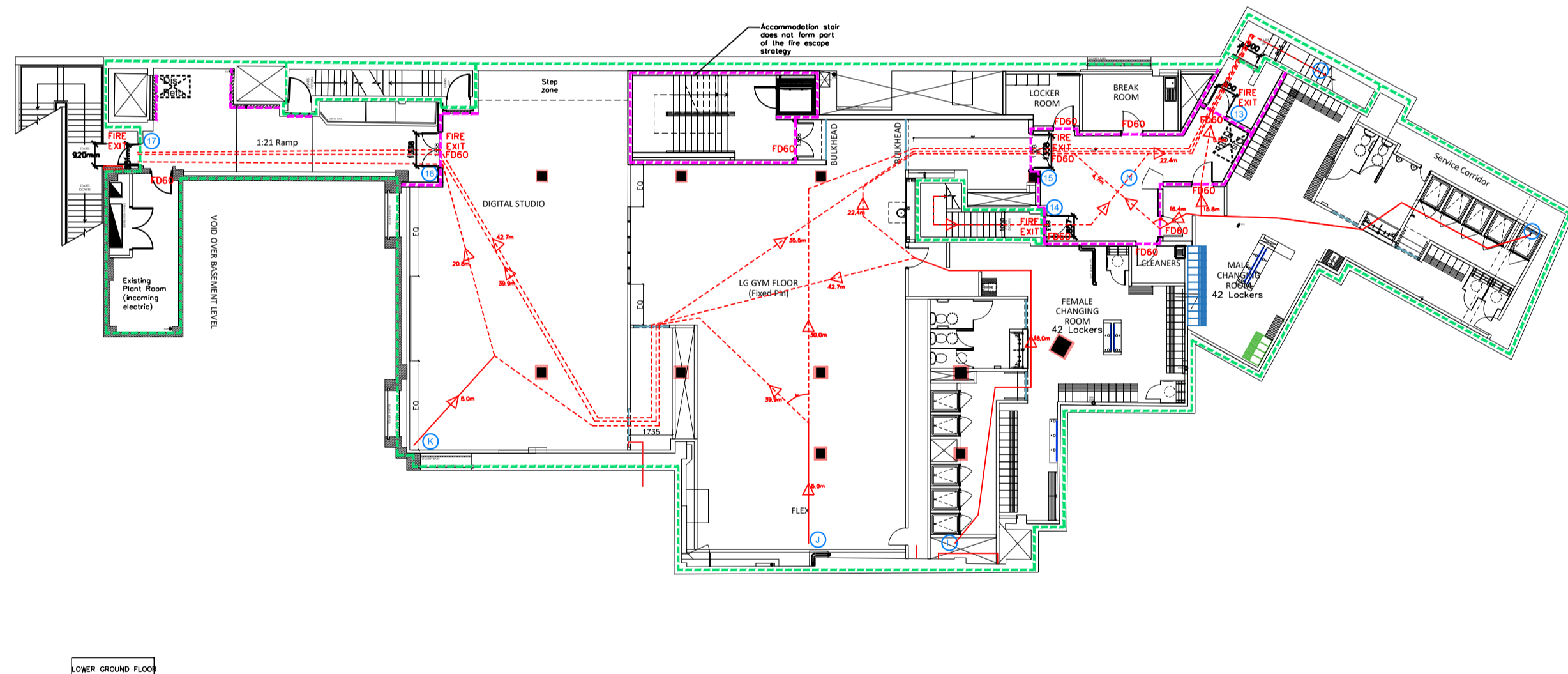
- Proposals must comply with all acoustic, Fire, Building Regulation requirements.
- No dimensions are to be scaled from this drawing.
- The contractor is responsible for checking all dimensions on site.



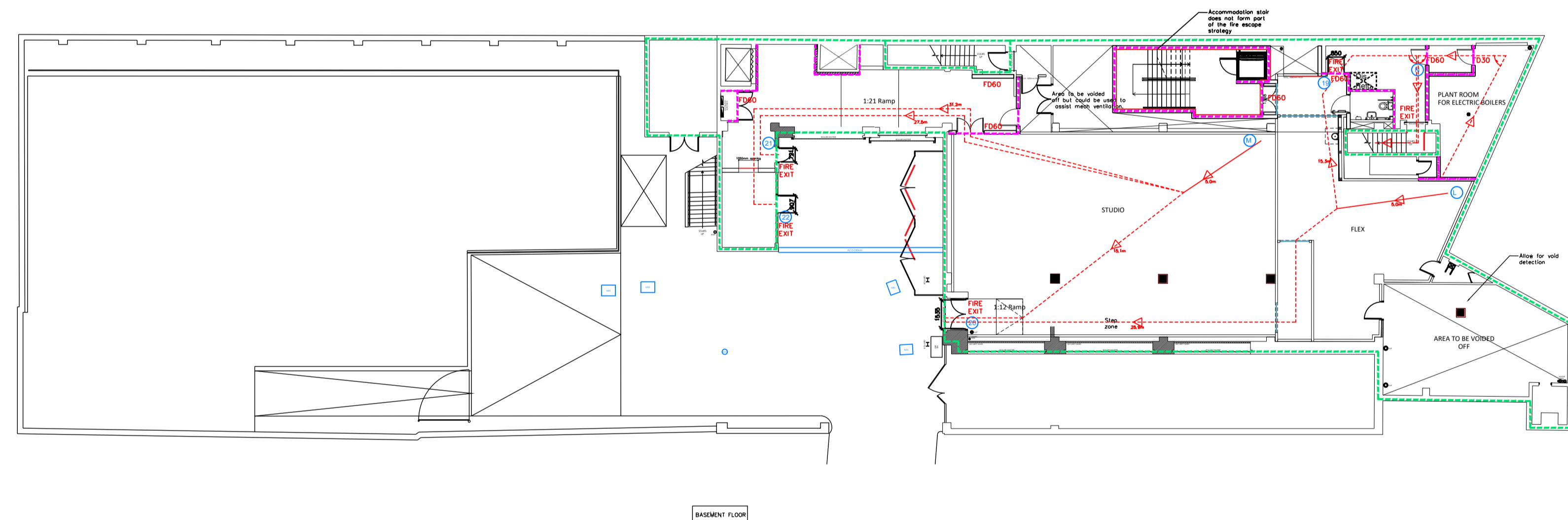
Roof/ First Floor Plan - Scale 1:200



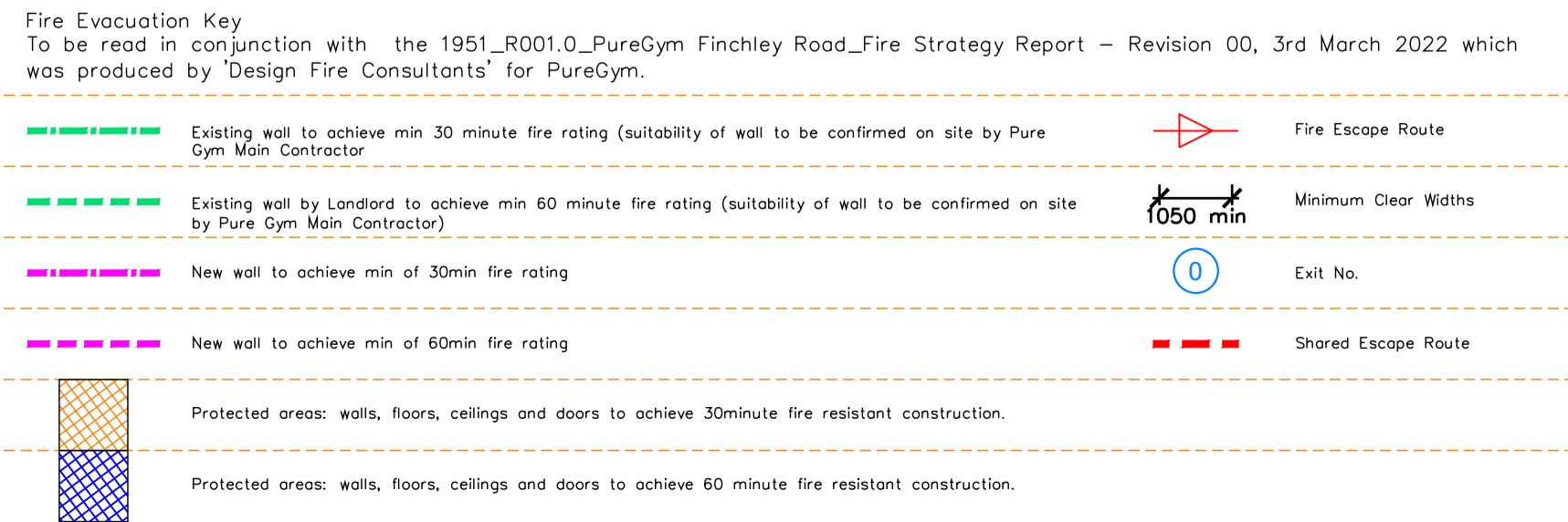
Ground Floor Plan - Scale 1:200



Lower Ground Floor Plan - Scale 1:200



Basement Floor Plan - Scale 1:200



REV T03

In line with Sections 3.21 & 3.22 of 'Approved Document Part B, Volume 2 - buildings other than dwellings' - the adjacent calculations provide justification for the clear opening widths for escape from each floor level/ room in accordance with Table 4 & Appendix C.

The below calculations have been taken from the 1951_R001.0_PureGym Finchley Road_Fire Strategy Report - Revision 00, 3rd March 2022 which was produced by Design Fire Consultants for PureGym.

Maximum Permitted Occupancy:
Due to the simultaneous evacuation strategy for the building, the maximum permitted occupancies are as follows:

First Floor
The First Floor Roof is limited to a maximum of 60 people due to the convergence of escape routes at Ground Floor, as detailed in Section 2.3.

Ground Floor
The Ground Floor is limited to a maximum of 310 people due to Exit 7, a pinch point affording access from this storey to Stair 02. See Section 2.2.5.

Lower Ground Floor

The Lower Ground Floor is limited to a maximum of 100 people due to the capacity of the existing Stair 01. See Section 2.3.1. The maximum permitted occupancy of the Lower Ground Floor is significantly less than the desired occupancy for this floor. A management plan is needed to ensure that an occupancy of 100 people is not exceeded.

Basement Floor
The Basement Floor is limited to a maximum of 170 people due to the capacity of Exit 1 and Exit 2 (see Section 2.2.5), and Stair 01 (see Section 2.3.1) which will predominantly serve occupants escaping from the Lower Ground Floor.

Total Estimate Building Fire Occupancy: 640

The PureGym data sheet makes reference to an anticipated maximum peak occupancy of 373 persons (based on historical data), the unit allows a maximum of occupancy of 640 persons to escape and is therefore suitable.

Sprinklers
System design and installed in compliance with BS EN 12845:2015 & LPC Technical Bulletin

Fire Alarm
Fire Alarm designed and installed to BS 5839. Smoke & heat detection / emergency lighting by specialist. Please refer to M&E engineer's drawings / specifications.

Escape Lighting
Emergency escape lighting designed and installed in accordance with BS 5266: Part 1. Please refer to M&E Engineer's drawings for final layout and specification.

Smoke Extract
Smoke Extract System to be designed and installed in accordance with BS 7346: Part 8. Please refer to M&E Engineer's drawings for final layout and specification.

Escape Signage and emergency lighting is CDP under the M&E specification. Details of contractor's proposals to be provided to Building Control Approved Inspector and Fire Officer within the Contractors Proposals Package, Clause 1.4

C01 D6.10.22 Updated with revised Dis Refuge location at 1st floor.		CV
Rev / Date	Description	Drawn/ Checked
PROJECT TITLE		DRAWING TITLE
177 Finchley Road, South Hampstead, London, NW3 6LB		Means of Escape Plan
1st, Ground, Lower Ground & Basement Plans		
DRAWN / CHECKED	DATE	SCALE
RSP/PG	09.07.21	1:200 @ A1
DRAWING NO.	JOB No.	DRAWING No.
	2008	003-MOEP
DRAWING PURPOSE		Rev
CONSTRUCTION		C01

PUREGYM

Pure Gym Ltd
Town Centre House
The Merrion Centre
Leeds
LS2 8LY

e: architecture@puregym.com
t: 0113 285 0787
w: www.puregym.com