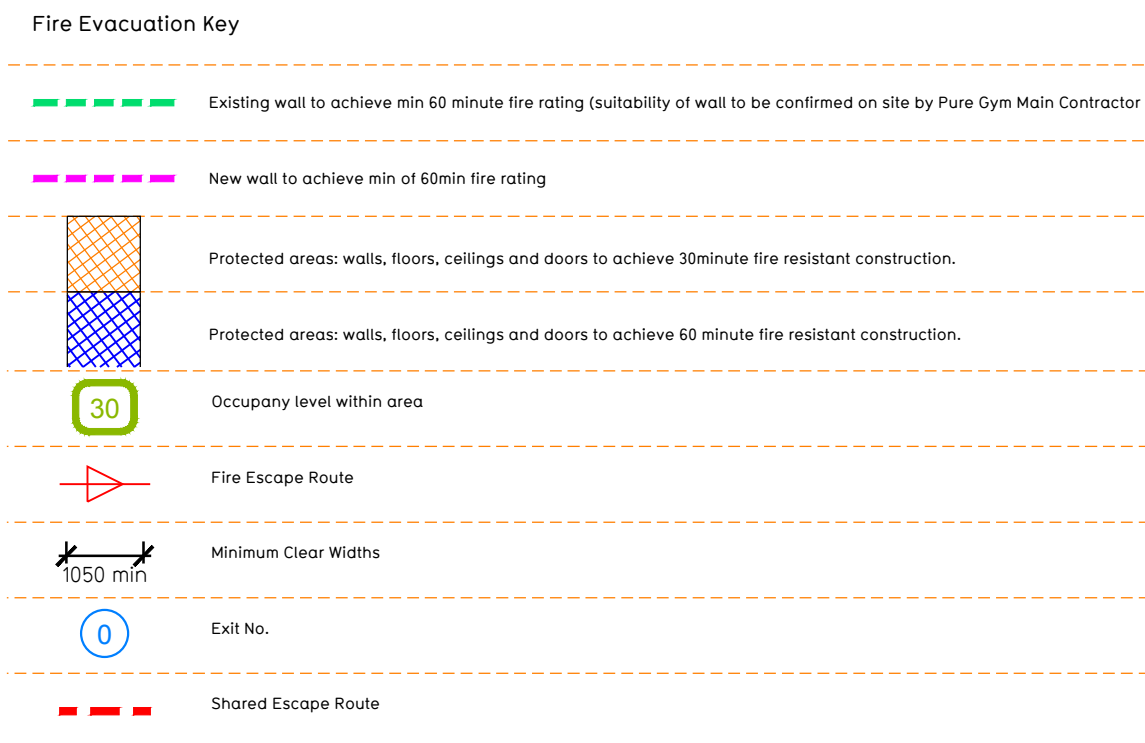


**NOTE:**

- Proposals must comply with all acoustic, fire & building regulation requirements
- No dimensions are to be scaled from this drawing. The contractor is responsible for checking all dimensions on site



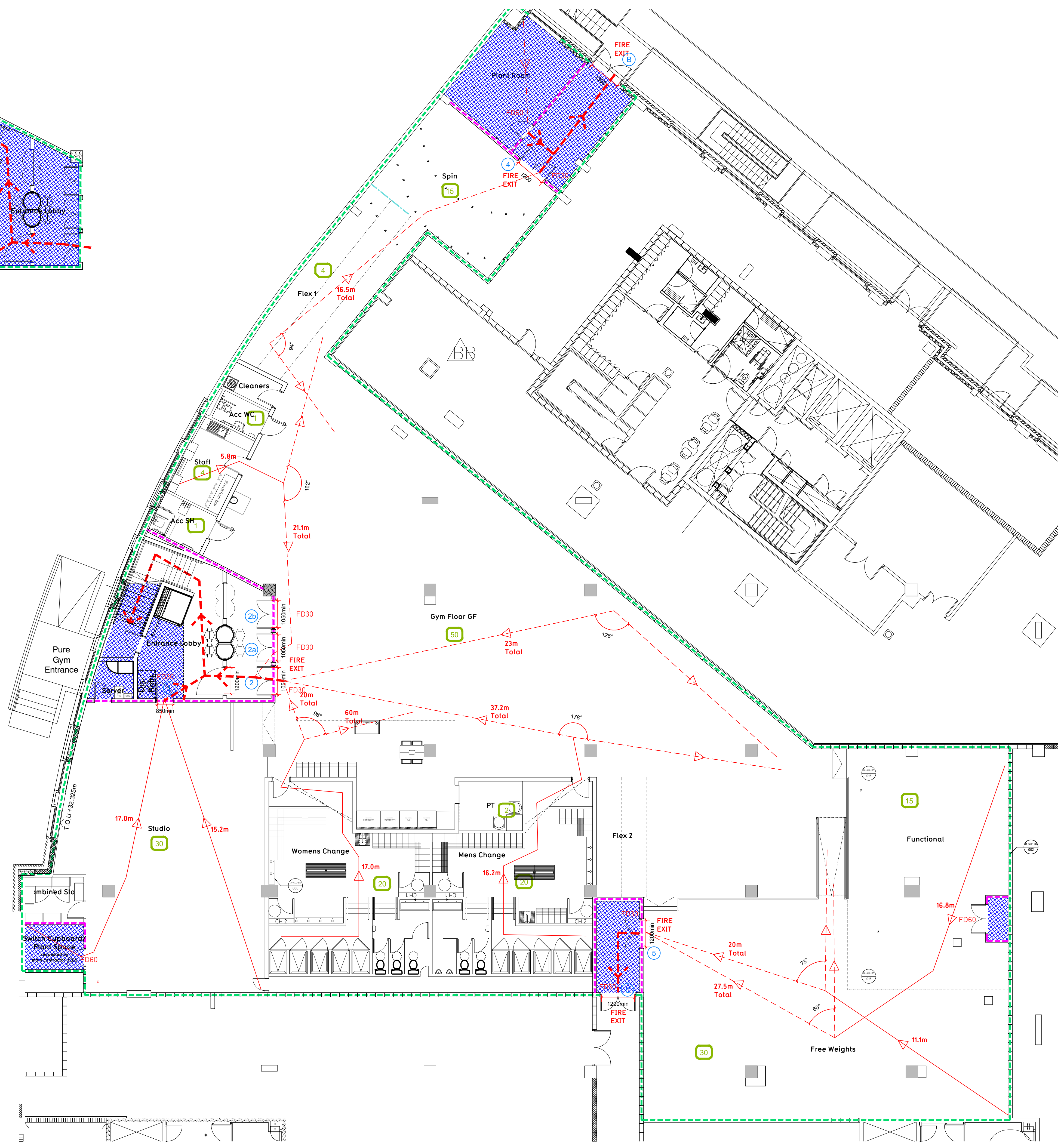
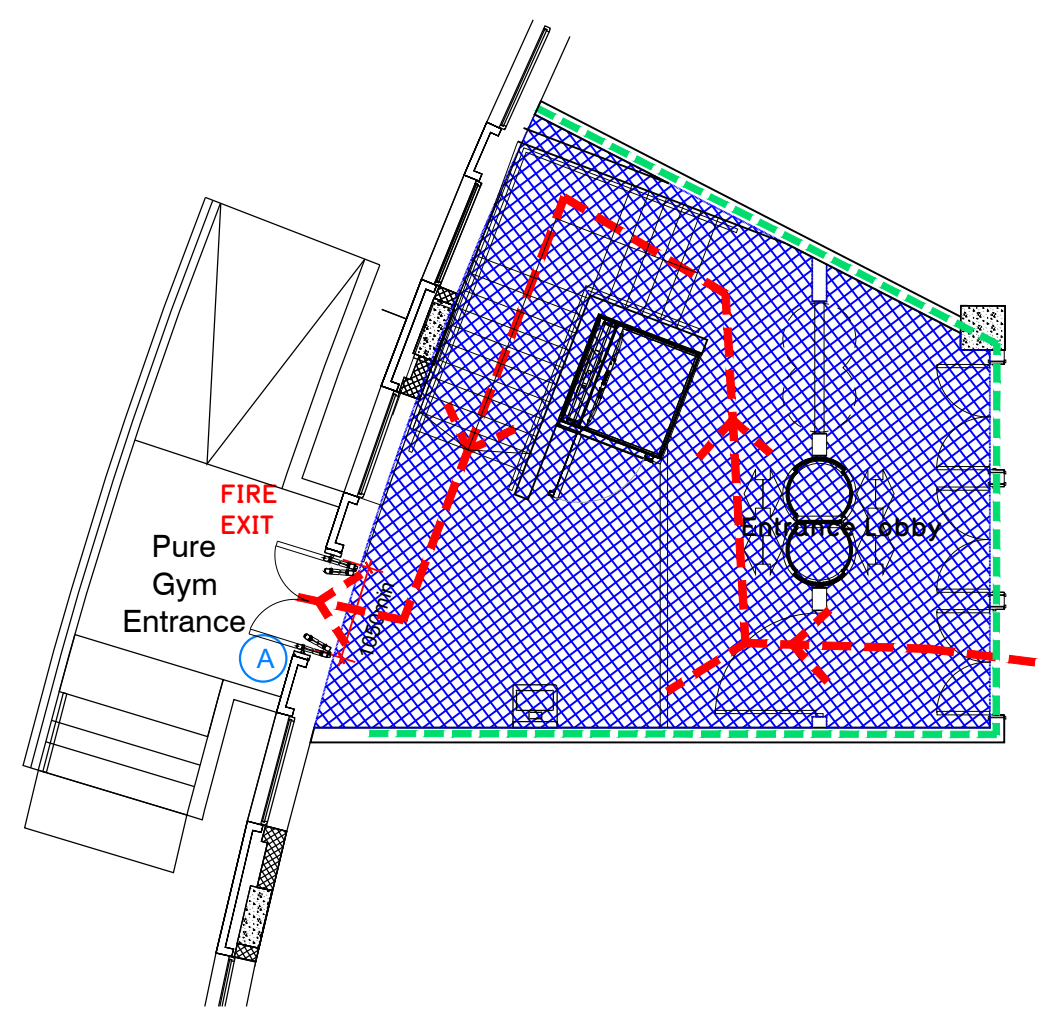
**Escape Route Widths:**  
 In line with Sections 3.21 & 3.22 of 'Approved Document Part B, Volume 2 - buildings other than dwellings' - the adjacent calculations provide justification for the clear opening widths for escape from each floor level/ room in accordance with Table 4 & Appendix C.

**Level: Ground Floor**  
 Escape for Gym floor to protected escape areas  
 Exit 1 Clear Opening Width = 850mm (65 persons max, this serves only the studio)  
 Exit 2, 3a and 3b Clear Opening Width = 1000mm (220 persons each)  
 Exit 3 Clear Opening Width = 1000mm (220 persons)  
 Exit 4 Clear Opening Width = 1000mm (220 persons) Discounted

Based on the occupancy of the main gym area 220 people there are 2 exits with a combined minimum capacity of 440 people, thus sufficient escape capacity. The studio is served by its own dedicated fire door with a capacity of 65, and is therefore thought to meet with the Approved Document Part B.

**Final Exits**  
 Exit A Clear Opening Width = 1050mm (220 persons)  
 Exit B Clear Opening Width = 1300mm (220 persons min)  
 Exit C Clear Opening Width = 1200mm (220 persons min)

Each final exit has sufficient capacity to take the entire gym floor occupancy and is thought to meet with the Approved Document Part B.



Rev	Date	Description	Drawn/Checked
C	23.10.19	BOLT changes throughout. Update to stairs.	EK/PG
B	24.09.19	Norton Bi-fold entrance doors added.	EK/PG
A	20.09.19	Entrance amended.	EK/PG

**Kidbrooke (London)**  
 Kidbrooke Village Centre

**Fire Evacuation Plan**  
 Lower Ground and Ground Floor Plans

Drawn: SS/PG | Checked: SS/PG | Date: 13.08.19 | Scale: 1:100 @ A1 | Job No: 042 | Drawings No: 003 - FEP | Rev: C

**CONSTRUCTION**

Pure Gym Ltd  
 Town Centre House  
 The Meriton Centre  
 Leeds  
 LS2 8LY  
 e: architecture@puregym.com  
 t: 0113 285 8787  
 w: www.puregym.com