

Item 2.9.1 Escape Principles

Travel distances, occupancy levels and final escape clear opening widths identified on drawings 2-900.

Item 2.9.15 Obstacles

The entrance pods are not for use as a means of escape. In the event of an emergency, the accessible door adjacent to the pods should be used as an escape route. The Ingersoll Rand B-Parting folding door falls safe in the event of a fire or power failure and has a break open facility which allows the door to be manually pushed open from the inside by gym members. All final exit doors are to be on mag-locks linked to the fire alarm.

2.11.3 Fire alarm system

Fire alarm system to be L2 Automatic fire alarm

3.12. Number of Sanitary facilities

Sanitary provision is to be installed in accordance with table 3.12.5 of the Scottish Building Regulations section 3 in line with the occupancy numbers identified on drawings.

3.12.2 Provision of Staff

Staff are to use the facilities within the changing rooms. Staff numbers (which are minimal at any one time) are included within the declared occupancy capacities used for the calculations.

4.2.1 Access within buildings

All areas, to be designed in accordance with Scottish Building Regulations section 4. The free weights area is part of the existing building fabric, and has no independent disabled access. Should a disabled person wish to use the equipment within this area, there is an area to the foot of the stairs which is to allocated as a disabled free weights area. If required, gym staff will bring the equipment to the members within this space for use.

4.2.5 Internal Doors

External lobby doors to the changing rooms are to be provided with vision panels designed in accordance with section 4 of the Scottish Building Regulations

**1** Denotes Occupancy Levels

**D** Denotes Fire Exit Door Reference

**17.2m** Denotes Escape Distance

REV	DATE	DESCRIPTION	DRN	CHK
E	06.08.12	WATER FOOT ADDED	GL	HM
D	30.07.12	OCCUPANCY TABLE AMENDED: ENTRANCE REMOVED AS AN ESCAPE ROUTE	GL	HM
C	27.07.12	NOTES ADDED FOLLOWING MEETING WITH THE WARRANT OFFICER	GL	HM
B	16.07.12	FIRE PLAN UPDATED IN LINE WITH RECENTLY AMENDED LAYOUT	GL	HM
A	14.06.12	REVISED LAYOUT FOLLOWING COMMENTS ON THE BUILDING WARRANT APPLICATION: STAIRCASE AMENDED, WALLS ADDED TO DOOR OPENINGS OF MALE CHANGE, ACCESSIBLE WC AND SHOWERS. ALSO UPDATED LAYOUT FOLLOWING CHANGES TO THE LOBBY AREA ON THE GA PLAN FOLLOWING COMMENTS FROM THE LA	GL	HM

PROJECT TITLE	PURE GYM LTD WEST MARKETGATE, DUNDEE
DRAWING TITLE	GROUND FLOOR FIRE PLAN
DRAWN/CHECKED	GG/HM
DATE	JULY '11
SCALE	1:200 @A3
JOB NO	1PG23
DRAWING	2-600
REVISIONS	E

**MICHAEL HYDE AND ASSOCIATES LIMITED**  
Chartered architects

MANCHESTER ■ SHEFFIELD □

51 BARTON ARCADE  
D E A N S G A T E  
MANCHESTER M3 2SU  
TEL 0161 834 1018  
FAX 0161 834 4798  
Manchester@MHA  
architects.com

ALLIANCE HOUSE  
LEOPOLD STREET  
SHEFFIELD S1 2GY  
TEL 0114 2789666  
FAX 0114 2787751  
Sheffield@MHA  
architects.com



Fire Exit Door Widths

Door Ref	Clear Opening Width
A	860mm
B	870mm
C	970mm
D	1528mm

Occupancy Table

Area	Occupancy
Gym Floor Area	40
Studio Area	30
Free Weights Area	30
Office & Server	1 Staff
Kcc Wc	1
Kcc Shower	1
Male Changing Rooms	Inc
Female Changing Rooms	Inc
First Floor	
Gym Floor Area A	50
Gym Floor Area B	30
Gym Floor Area C	15
T	2 (1+1 Staff)
T	2 (1+1 Staff)
Kcc WC	1
Staff	3 Staff
Store	N/A
Total	200 (+6 Staff)

3 The maximum occupancy for the gym is 200 members at any one time in addition to a further 6 staff giving a total of 206 spik over the ground and first floor.

Notes:

Item 2.9.1 Escape Principles

Travel distances, occupancy levels and final escape clear opening widths identified on drawings 2-600.

Item 2.9.15 Obstacles

The entrance pods are not for use as a means of escape. In the event of an emergency, the accessible door adjacent to the pods should be used as an escape route. The Ingersoll Rand B-Parting folding door falls safe in the event of a fire or power failure and has a break open facility which allows the door to be manually pushed open from the inside by gym members. All final exit doors are to be on mag-locks linked to the fire alarm.

2.11.3 Fire alarm system

Fire alarm system to be L2 Automatic fire alarm

3.12 Number of Sanitary facilities

Sanitary provision is to be installed in accordance with table 3.12.5 of the Scottish Building Regulations section 3 in line with the occupancy numbers identified on drawings.

3.12.2 Provision of Staff

Staff are to use the facilities within the changing rooms. Staff numbers (which are minimal at any one time) are included within the declared occupancy capacities used for the calculations.

4.2.1 Access within buildings

All areas, to be designed in accordance with Scottish Building Regulations section 4. The free weights area is part of the existing building fabric, and has no independent disabled access. Should a disabled person wish to use the equipment within this area, there is an area to the foot of the stairs which is to allocated as a disabled free weights area. If required, gym staff will bring the equipment to the members within this space for use.

4.2.5 Internal Doors

External lobby doors to the changing rooms are to be provided with vision panels designed in accordance with section 4 of the Scottish Building Regulations

**1** Denotes Occupancy Levels

**D** Denotes Fire Exit Door Reference

**17.2m** Denotes Escape Distance

F 12.06.12 ROOM SIZES TO STORE & PT ROOMS AMENDED GL HM

E 29.08.12 RAMP ADDED TO PROVIDE ACCESS TO STAFF ROOM, ACCESSIBLE TOILET AND STORE; STABILITY FINS ADDED TO RAMPS; WATER FRONT ADDED GL HMI

D 30.07.12 OCCUPANCY TABLE AMENDED-ENTRANCE REMOVED AS AN ESCAPE ROUTE 27.07.12 NOTES ADDED FOLLOWING MEETING WITH THE WARRANT OFFICER GL HMI

C 27.07.12 FIRE PLAN UPDATED IN LINE WITH RECENT LAYOUT AMENDMENTS. GL HMI

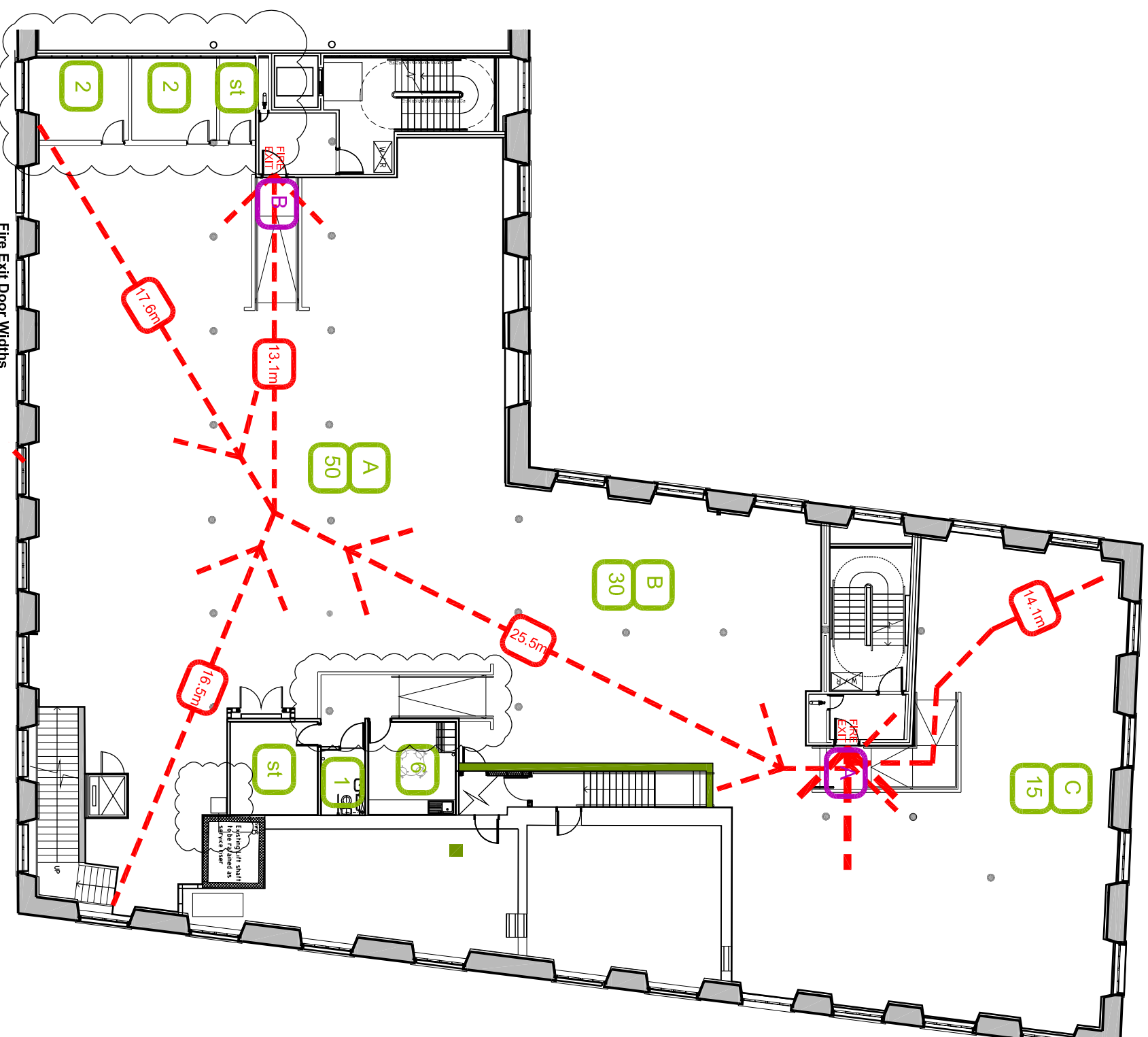
B 16.07.12 REVISED LAYOUT FOLLOWING COMMENTS ON THE BUILDING WARRANT APPLICATION; DISABLED WC ADDED TO THIS FLOOR GL GL

A 14.05.12 WARRANT APPLICATION; DISABLED WC ADDED TO THIS FLOOR GG GG

PROJECT TITLE  
PURE GYM LTD  
WEST MARKETGAIT, DUNDEE

DRAWING TITLE  
FIRST FLOOR  
FIRE PLAN

DRAWN / CHECKED	DATE	SCALE
GG/HM	JULY '11	1:200 @A3
JOB NO	DRAWING	REVISIONS
1PG23	2-601	E

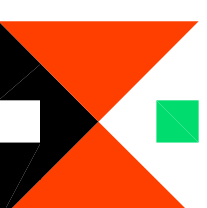


Door Ref	Clear Opening Width
A	870mm
B	860mm

Area	Occupancy
Gym Floor Area	40
Studio Area	30
Free Weights Area	30
Office & Server	1 Staff
Acc Wc	1
Acc Shower	1
Male Changing Rooms	Inc
Female Changing Rooms	Inc
<b>First Floor</b>	
Gym Floor Area A	50
Gym Floor Area B	30
Gym Floor Area C	15
PT	2 (1+1 Staff)
PT	2 (1+1 Staff)
Acc Wc	1
Staff	3 Staff
Store	N/A
<b>Total</b>	<b>200 (+6 Staff)</b>

N.B The maximum occupancy for the gym is 200 members at any one time in addition to a further 6 staff giving a total of 206 split over the ground and first floor.

MICHAEL HYDE AND ASSOCIATES LIMITED  
Chartered architects



MANCHESTER ■ SHEFFIELD □

51 BARTON ARCADE ALLIANCE HOUSE  
D E A N S G A T E LEOPOLD STREET  
MANCHESTER M3 2BJ SHEFFIELD S1 2GY  
TEL 0161 834 1018 TEL 0114 2759666  
FAX 0161 834 4798 FAX 0114 2757751  
Manchester@MHA Sheffield@MHA  
architects.com architects.com